



The new Purge Air System provides reliable operation of stall warning and detection systems



Howden's new Purge Air System keeps your sensing ports free from plugging which ensures you accurate stall warning and detection to avoid fan failure.

Howden has listened to customers concerns about the performance of the stall systems and has developed a purge air sytem which allows you to have confidence in your stall monitoring system.

Axial fans running in stall can lead to catastrophic equipment failure, causing severe damage to equipment.

Fans running in stall for a prolonged period of time can experience in blade rupture with the result of costly replacement of major fan components as well as considerable downtime.

If your axial fan is provided with a stall probe or a complete stall warning system, the probes and measuring pipes or ports may experience plugging. Plugging is often seen if the fan is operated in a dust laden environment. The fan operation may have a lot of frequent starts and stops or there are frequent soot blowing of the unit air heater. This can lead to increased moisture levels which may cause fly ash particles to stick inside measuring ports and pipes and plug the ports or pipes.

This can result in the probes not detecting or warning of stall, leading to catastrophic failure because no warning is given and the fan continues operation in the stall region.

Many older stall detection systems only contain one stall measuring probe. Howden recommends upgrading the number of stall probes from one to three (3) to improve the reliability of the system. This ensures a more reliable two out of three measurement system to avoid false trip from stall alarm system, we also recommend using probes with a lager diameter sensing ports (1/2").

Before purge air is installed



Measuring ports are plugged

Benefits

By installing a Howden Purge Air System, you will:

- Avoid plugging of the stall probes for stall alarm and stall warning measuring ports.
- Increase the reliability of the installed pressure switches or transmitters
- Ensure safe and reliable function of your stall detection and warning systems

The Purge Air System can be supplied in 2 variations.

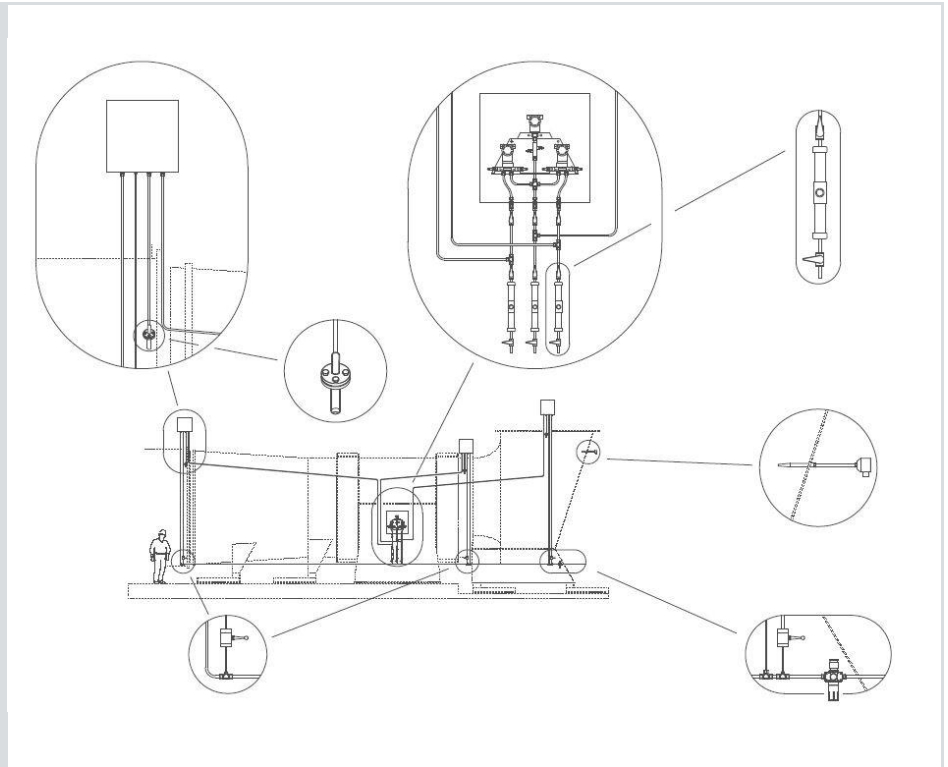
Purge air solution for stall warning

For applications with small to medium plugging problems at measuring points, we recommend our our "Purge air system with high-pressure blasts. (illustrated to the right).

For applications with heavy plugging problems at the measuring points, we recommend "Purge air system with constant air-flush).

Purge air solution for stall probe

The Howden Purge Air System for stall probes is based upon a purge air system with constant air-flush.



Right: Purge air system with high-pressure blasts (illustration is showing one side of the system)

After purge air is installed



Measuring ports are open

For more information please **contact your local Howden office.**

This bulletin has been released by:

Howden Axial Fans ApS, Industrivej 23, DK-4700, Næstved, Denmark

Tel: +45 55 77 62 62

Web: www.howden.com

Email: howdenaxialfans@howden.com

Revolving Around You™