

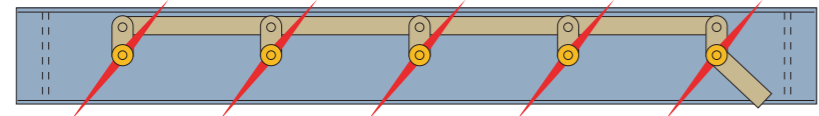


**CASING SPLITS**

- Recommended on fans over 1.4m (54") impeller diameter for rotor removal and for shipment
- Splits flanged and bolted for rotor removal
- Shipping splits designed for field welding as standard

**INLET LOUVRE DAMPERS**

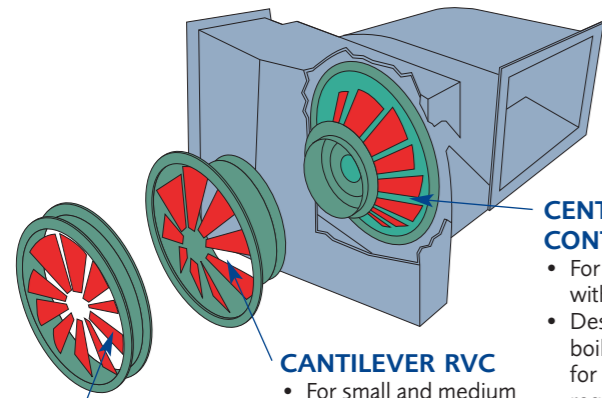
- For flow control on fans with inlet boxes
- Recommended for abrasive and high temperature applications
- High temperature designs available



Parallel bladed for power savings at reduced flows

**RADIAL VANE CONTROL**

Three types for flow control with increased power savings



**BOLT-ON RVC**

- For fans without inlet boxes
- All linkages located outside the gas stream

**CANTILEVER RVC**

- For small and medium fans with inlet boxes
- Most economical design with linkages located in gas stream

**CENTRE CONTROL RVC**

- For large fans with inlet boxes
- Designed for boiler fans and for applications requiring high efficiency
- All linkages located outside gas stream

**DRIVE ARRANGEMENTS**

- Direct coupled, V-belt or variable speed drive
- Custom barring gear assemblies available for special applications

**BEARING PEDESTALS**

- Short pedestals for use on concrete sub-bases or full pedestals for flush mounting
- Isolated or integral designs available

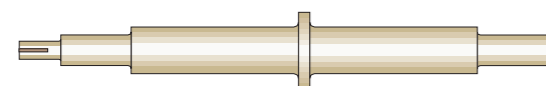
**DRAIN CONNECTIONS**

- Installed at lowest points in fan scroll and inlet boxes to allow drainage

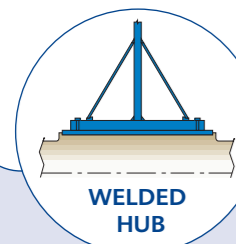
**FAN DISCHARGE**

- Any air discharge angle

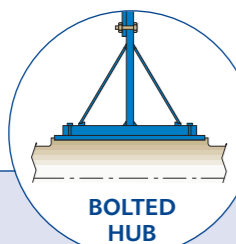
**FAN SHAFT AND HUB**



MACHINED AND FORGED SHAFTS



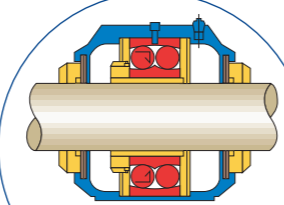
WELDED HUB



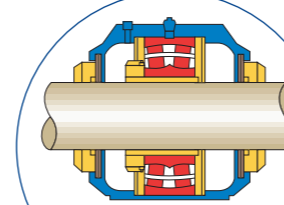
BOLTED HUB

- Clad and high-temperature designs also available (integral forged shaft and hub)

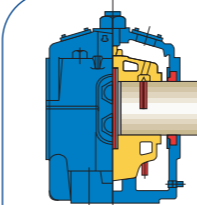
**BEARINGS**



ANTI-FRICTION BALL BEARINGS



ANTI-FRICTION ROLLER BEARINGS



SLEEVE BEARINGS

**BEARING DESIGN OPTIONS**

- Grease or oil lubrication
- Thrust face or pads
- Air, water or oil-cooled
- Vibration monitors, RTDs/thermocouples, oil sight gauges and circulating oil systems available

**Design Components**

**INLET BOXES**

- Provided when required
- Any air inlet angle

**CENTRIFUGAL IMPELLER**

- Six wheel types available
- Single or double inlet
- Diameters to 4.5 m (180")

**FAN HOUSING**

- All welded construction

**ACCESS DOORS**

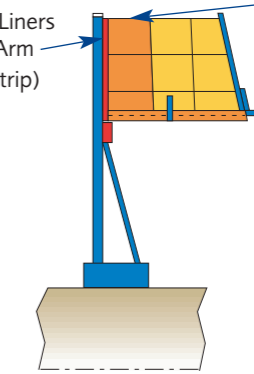
- Installed where required
- Bolted or hinged design

**OUTLET EVASE**

- For lower air discharge velocities and improved static efficiency

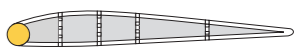
**WHEEL WEAR EQUIPMENT**

- Backplate Liners or Spider Arm Plates (G strip)



Partial or Full Wearplates

**AEROFOIL BLADE WEAR PROTECTION**



Solid Nosebars

**WEARPLATE FASTENERS**



Plug Welded (Standard)

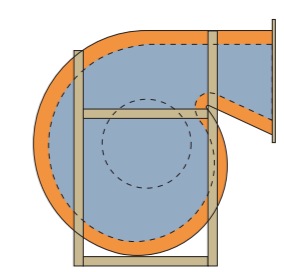


Countersunk Huck Bolts

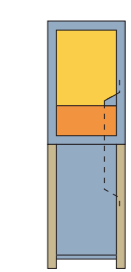


Countersunk Screws

**CASING WEAR EQUIPMENT**



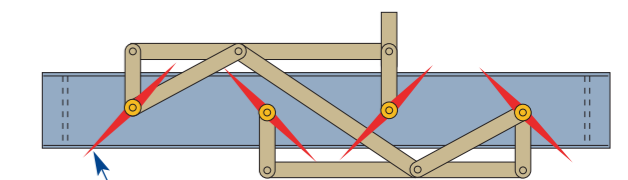
Partial Side Plate Liners



Scroll Liners

**OUTLET LOUVRE DAMPERS**

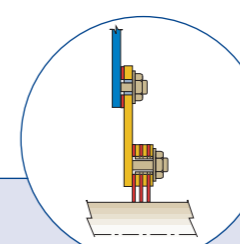
- For discharge flow control
- Parallel-bladed, and high-temperature designs available



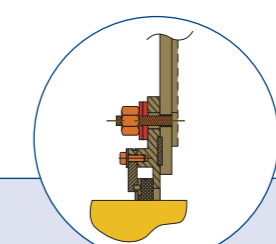
Opposed bladed to provide nominally linear flow control

**SHAFT SEALS**

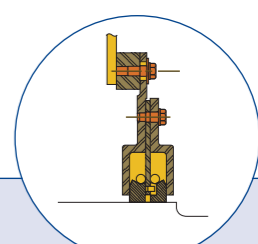
**LABYRINTH SHAFT SEAL**



**SINGLE CARBON GLAND SHAFT SEAL\***



**DOUBLE CARBON RING SHAFT SEAL\***



\* For applications where minimum air leakage and low noise is required